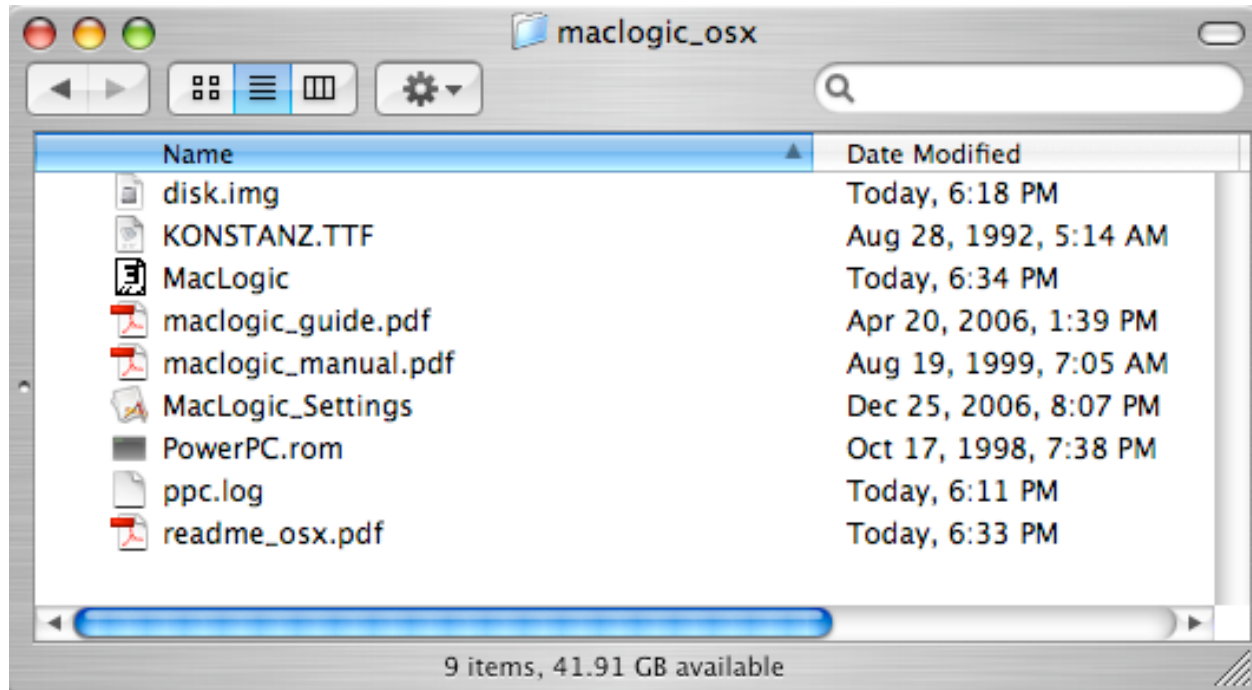
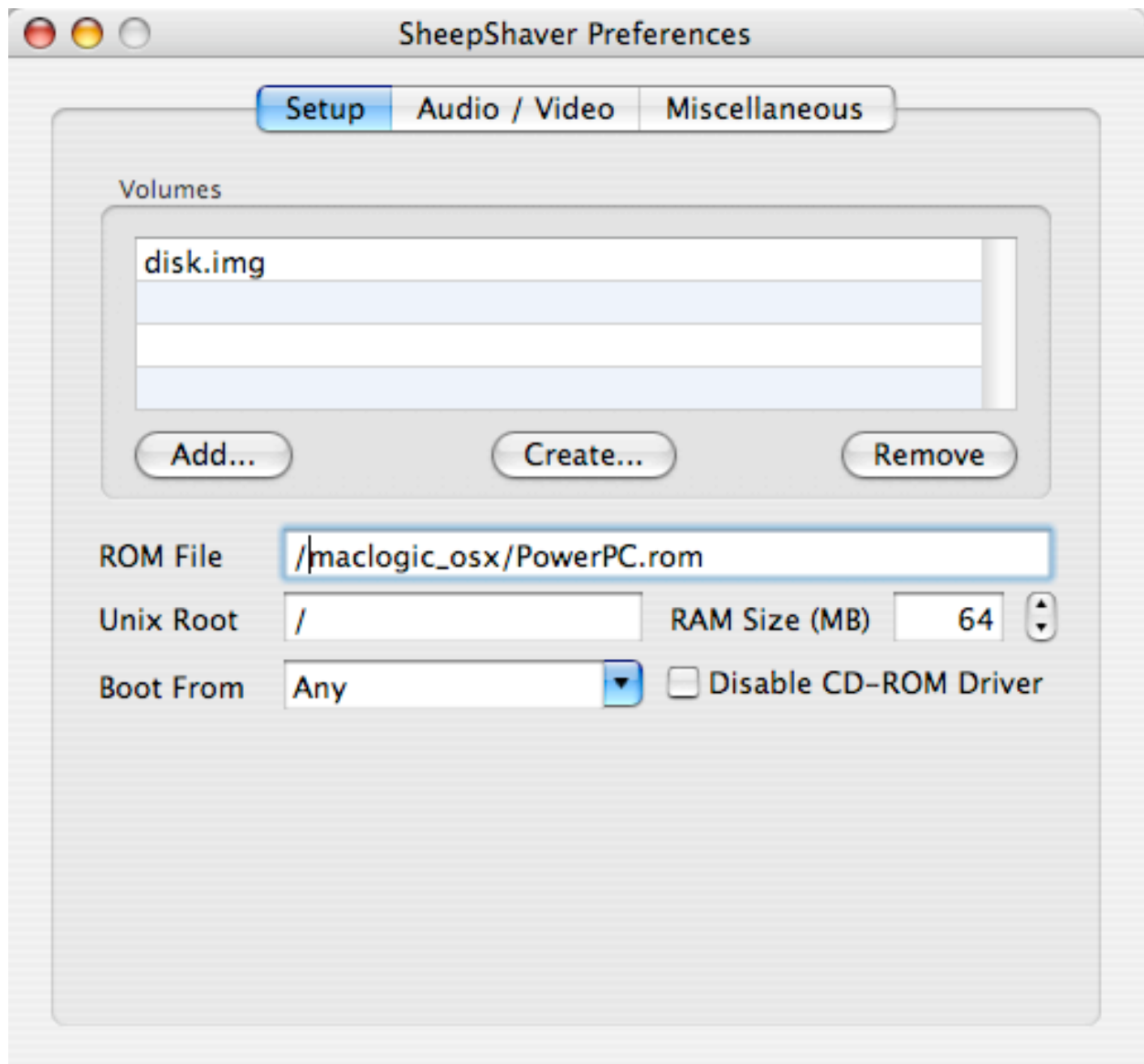


Running MacLogic Under SheepShaver on Mac OSX (Readme)

Now that you have downloaded and extracted the zip file `maclogic_osx.zip`, you should have a folder called `maclogic_osx` on your machine that looks like this:

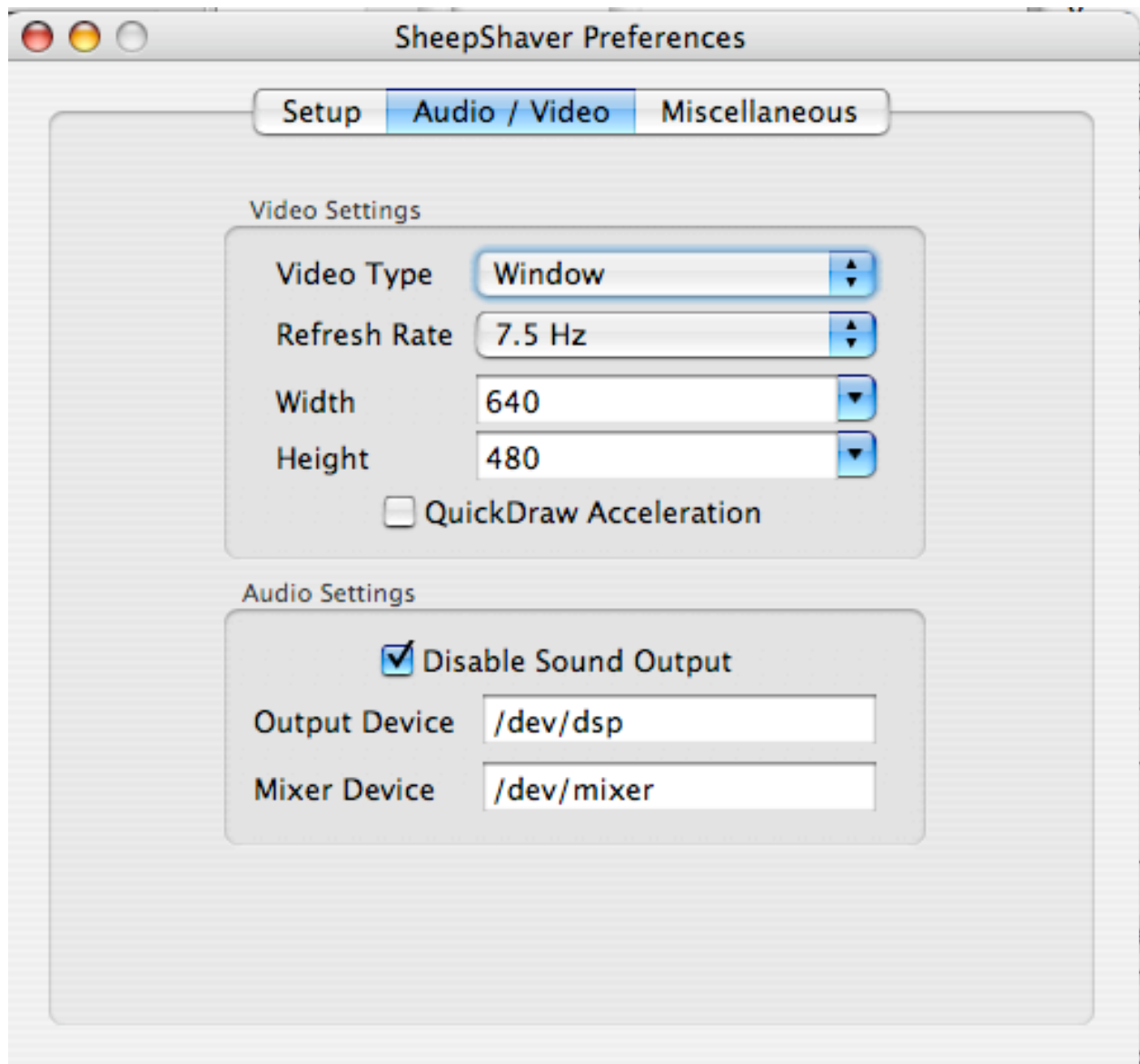


All you need to do now is set three preference panes using the `MacLogic_Settings` program. To do this, just run the `MacLogic_Settings` program. The first of three preference panes should look like the following:

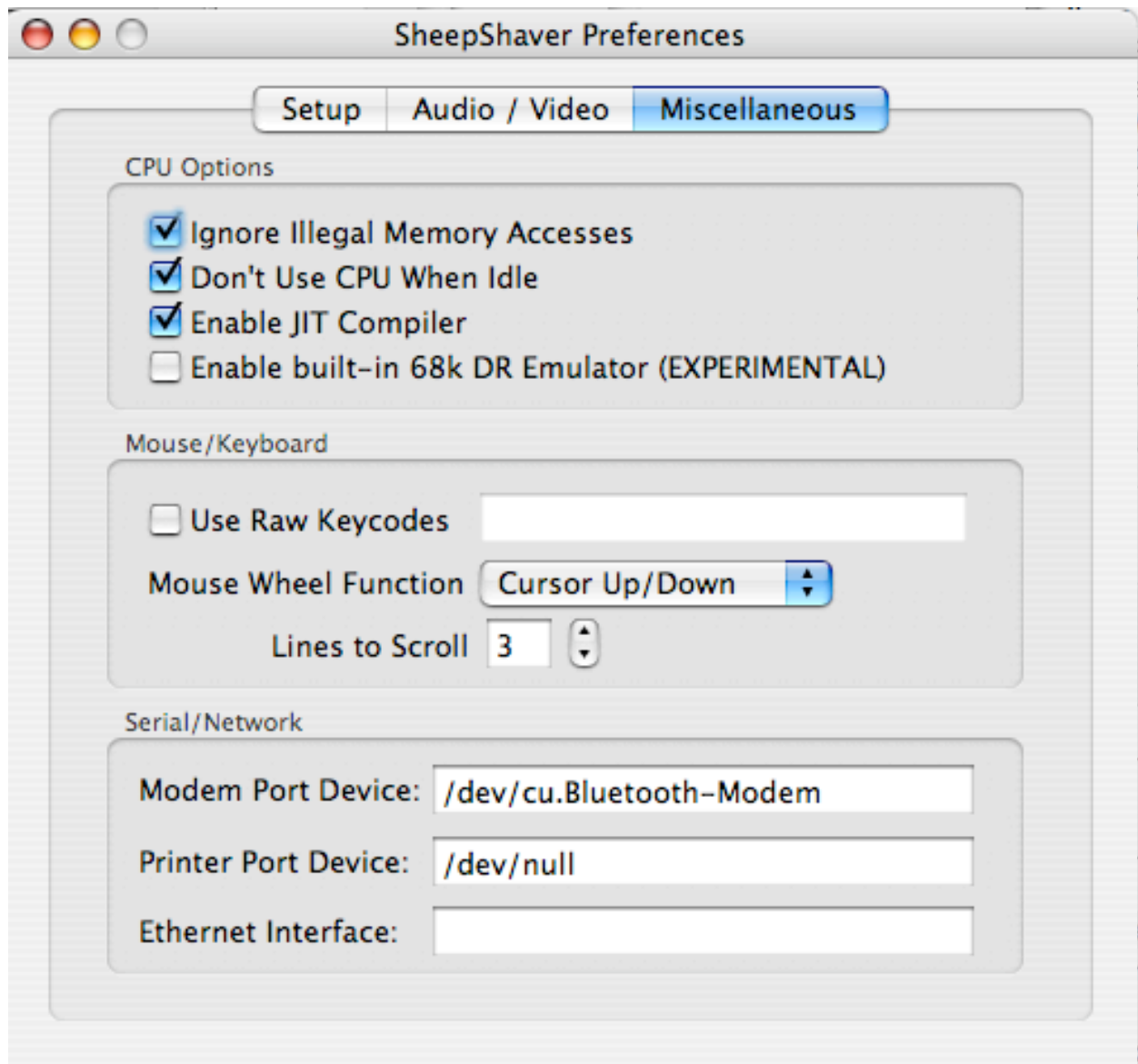


In this pane you need to (1) make sure that the location of “disk.img” is entered using the “Add...” button (first remove the old “disk.img” location), and (2) make sure that the path of the “PowerPC.rom” file is listed in the ROM File field (yours will be different than what’s listed there now).

The other two panes should be set to look as follows:



and



Once these three panes are set, you can quit the `MacLogic_Settings` program.

Now, you should be ready to run `MacLogic`. Go ahead and double-click the `MacLogic` icon in this `maclogic_osx` folder. This should run Mac OS 7, and then `MacLogic`.

[There is one more (optional) thing you can do, and that is to install the `MacLogic` font (in `KONSTANZ.TTF` on in the `maclogic_osx` folder) into OSX. Note: you should be able to copy and paste text from OS 7 to OSX. This is useful for copying proofs from `MacLogic` into a Mac Word Processor. You don't *need* to do this in order to run `MacLogic` (only to copy and paste). But, it is useful to do so.]

See `maclogic_guide.pdf` & `maclogic_manual.pdf` for tips on using `MacLogic`.